



**India Meteorological Department
(Ministry of Earth Sciences)**

BULLETIN NUMBER: 04 (BOB/06/2021)

TIME OF ISSUE: 0100 HOURS IST

DATED: 19.11.2021

FROM: INDIA METEOROLOGICAL DEPARTMENT (FAX NO. 24643965/24699216/24623220)

**TO: CONTROL ROOM, NDM, MINISTRY OF HOME AFFAIRS (FAX.NO. 23093750)
CONTROL ROOM NDMA (FAX.NO. 26701729)
CABINET SECRETARIAT (FAX.NO.23012284, 23018638)
PS TO HON'BLE MINISTER FOR S & T AND EARTH SCIENCES (FAX NO.23316745)
SECRETARY, MOES (FAX NO. 24629777)
H.Q. (INTEGRATED DEFENCE STAFF AND CDS) (FAX NO. 23005137/23005147)
DIRECTOR GENERAL, DOORDARSHAN (23385843)
DIRECTOR GENERAL, AIR (23421105, 23421219)
PIB MOES (FAX NO. 23389042)
UNI (FAX NO. 23355841)
D.G. NATIONAL DISASTER RESPONSE FORCE (NDRF) (FAX NO. 26105912, 2436 3260)
DIRECTOR, PUNCTUALITY, INDIAN RAILWAYS (FAX NO. 23388503)
CHIEF SECRETARY, ANDHRA PRADESH (FAX NO. 0863-2441029, 08645-246600)
CHIEF SECRETARY, TAMIL NADU (FAX NO 044-25672304)
CHIEF SECRETARY, PUDUCHERRY (FAX NO 0413-2334145)
CHIEF SECRETARY, KERALA (FAX NO 0471-2327176)
CHIEF SECRETARY, KARNATAKA (FAX NO 080-22258913)
CHIEF SECRETARY, ANDAMAN & NICOBAR ISLANDS (FAX NO. 03192- 232656)**

Sub: Depression over southwest Bay of Bengal off north Tamil Nadu coast.

The Depression over southwest Bay of Bengal off north Tamil Nadu coast moved northwestwards with a speed of 10 kmph during past 6 hours and lay centred at 2330 hrs IST of 18th November 2021, over southwest Bay of Bengal off north Tamil Nadu coast, near Lat. 12.2°N and Long. 80.5°E, about 90 km south-southeast of Chennai and 80 km east-northeast of Puducherry. It is very likely to continue to move northwestwards and cross north Tamilnadu & adjoining south Andhra Pradesh coasts between Puducherry & Chennai by early morning of today, the 19th November, 2021.

(i) Rainfall (warning graphics enclosed)

19th Nov.: Light to moderate rainfall at most places with **heavy to very heavy rainfall** at isolated places very likely over north Tamil Nadu, Puducherry, south coastal Andhra Pradesh, Rayalaseema and south interior Karnataka and **heavy rainfall** at isolated places over north interior Karnataka.

(ii) Wind warning

- Squally wind speed reaching 45-55 kmph gusting to 65 kmph likely to prevail over southwest & adjoining west-central Bay of Bengal and along & off Tamil Nadu, Puducherry and

adjoining south Andhra Pradesh coasts during next 12 hours and decrease gradually thereafter.

(iii) Sea condition

- Sea condition will be rough to very rough over southwest & adjoining west-central Bay of Bengal and along & off Tamil Nadu, Puducherry and adjoining south Andhra Pradesh coasts during next 12 hours and improve gradually thereafter.

(iv) Fishermen Warning

- Fishermen are advised not to venture into southwest & adjoining west-central Bay of Bengal and along & off Tamil Nadu, Puducherry and adjoining south Andhra Pradesh coasts during next 12 hours. (Graphics enclosed).

(v) EXPECTED IMPACT (over Tamil Nadu, Puducherry and adjoining areas of Andhra Pradesh and Karnataka on 19th November) & ACTION SUGGESTED

A. Impact Expected

- Localized Flooding of roads, inundation and water logging in low lying areas and closure of underpasses mainly in urban areas of the above region.
- Occasional reduction in visibility due to heavy rainfall.
- Disruption of traffic in major cities due to water logging in roads leading to increased travel time.
- Minor damage to kutchha roads.
- Possibilities of damage to vulnerable structure.
- Localized Landslides/Mudslides
- Damage to horticulture and standing crops in some areas due to flood water inundation.

B. Action Suggested

- Check for traffic congestion on your route before leaving for your destination.
- Follow any traffic advisories that are issued in this regard.
- Avoid going to areas that face the water logging problems often.
- Avoid staying in vulnerable structure.

Next Bulletin will be issued at 0830 IST of today, the 19th November 2021.

(S.P. Singh)
Scientist-C, RSMC, New Delhi

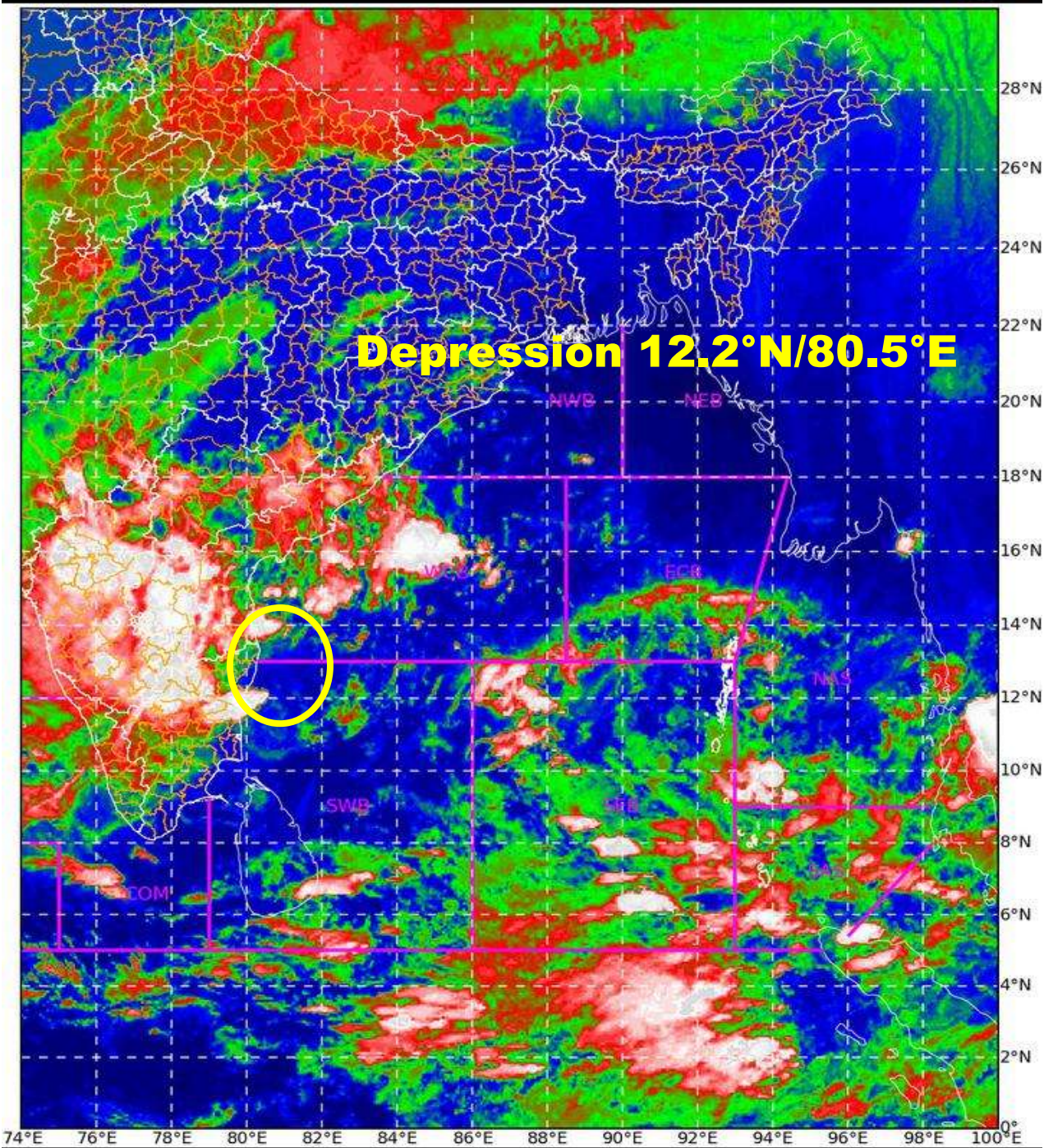
Copy to: ACWC Mumbai/ CWC Ahmedabadr/MC Goa/CWC Thiruvananthapuram

LEGEND: Heavy Rainfall: 64.5 to 115.5mm, **Very Heavy Rainfall:** 115.6 to 204.4mm **Most Places:** more than 76% of total stations, **Isolated Places:** Less than 25% of total stations

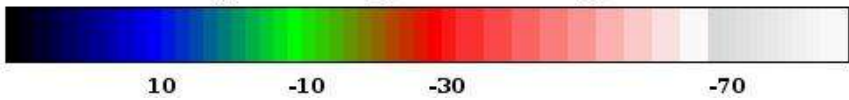
SAT : INSAT-3D IMG 18-11-2021/(1830 to 1856) GMT

IMG_TIR1_TEMP 10.8 um 19-11-2021/(0000 to 0026) IST

L1C Mercator



74°E 76°E 78°E 80°E 82°E 84°E 86°E 88°E 90°E 92°E 94°E 96°E 98°E 100°E



Celsius
IMD, DELHI



OBSERVED AND FORECAST TRACK OF DEPRESSION OVER SOUTHWEST BAY OF BENGAL BASED ON 1800 UTC OF 18TH NOVEMBER, 2021



DATE/TIME IN UTC

IST=UTC + 0530

L: LOW PRESSURE AREA

WML: WELL MARKED LOW PRESSURE AREA

D: DEPRESSION (17-27 KT)

DD: DEEP DEPRESSION (28-33 KT)

CS: CYCLONIC STORM (34-47 KT)

SCS: SEVERE CYCLONIC STORM (48-63KT)

VSCS: VERY SEVERE CYCLONIC STORM (64-89 KT)

ESCS: EXTREMELY SEVERE CYCLONIC STORM (90-119 KT)

SuCS: SUPER CYCLONIC STORM (\geq 120 KT)

● LESS THAN 34 KT

⊙ 34-47 KT

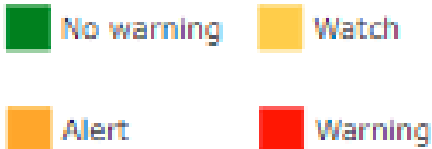
⊙ \geq 48 KT

— OBSERVED TRACK

— FORECAST TRACK

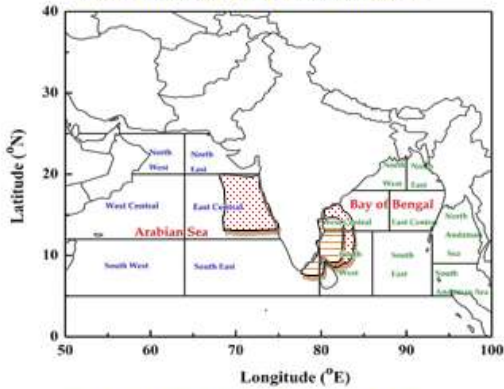
▲ CONE OF UNCERTAINTY

Meteorological Sub-division level heavy rainfall warning

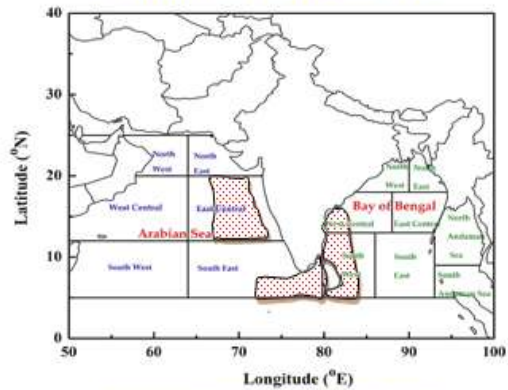


INDIA METEOROLOGICAL DEPARTMENT
FISHERMAN WARNING FOR BAY OF BENGAL AND ARABIAN SEA

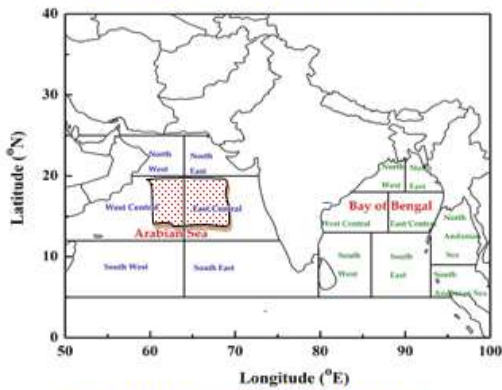
DAY-1: 18.11.2021/0600 UTC TO 19.11.2021/0600 UTC



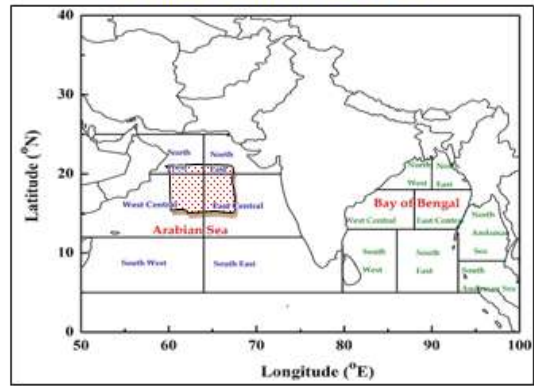
DAY-2: 19.11.2021/0600 UTC TO 20.11.2021/0600 UTC



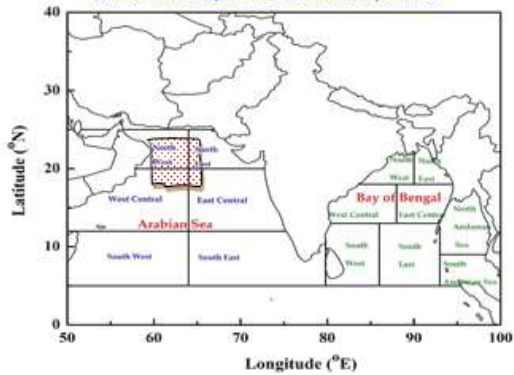
DAY-3: 20.11.2021/0600 UTC TO 21.11.2021/0600 UTC



DAY-4: 21.11.2021/0600 UTC TO 22.11.2021/0600 UTC



DAY-5: 22.11.2021/0600 UTC TO 23.11.2021/0600 UTC



AREA UNDER FISHERMEN WARNING

- 40-50 KMPH GUSTING TO 60 KMPH (SQUALLY WEATHER)
- 45-55 KMPH GUSTING TO 60 KMPH (SQUALLY WEATHER)
- 55-65 KMPH GUSTING TO 70 KMPH (STRONG WIND)